



# Internal Reporting Mechanisms for Environmental Performance

**Kathy Gerwig**

Vice President, Workplace Safety  
and Environmental Stewardship Officer

**Global Leaders of Environmental Assessment and Performance**

**December 2, 2011**

# About Kaiser Permanente

- At Kaiser Permanente, we play every position across the health care continuum. We provide the health care, the medical facilities and the insurance coverage.
- Founded in 1945, KP is the nation's largest not-for-profit health plan
- Nine states and Washington DC (CA, CO, GA, HI, MD, OH, OR, VA, WA)
- Health plan members, 8.9 million
- Employees, 167,000
- Physicians, 14,600
- Medical offices (clinics), 431
- Hospital-based medical centers, 36
- Square feet of real estate: 69 million
- Operating revenue, \$41 billion
- Doctor office visits, 37 million
- Prescriptions filled, 129 million
- Surgeries, 547,338
- Mammograms, 1.1 million
- Secure e-mails sent to physicians and clinicians in 2010, 10 million

~~~~~

- **Implications for public reporting**

# Today's Agenda

## **Objective:**

Share how Kaiser Permanente (KP) governs its environmental performance through a variety of internal reporting mechanisms.

## **Topics:**

- Background on KP and our environmental stewardship program, including governance structure
- Goals and internal reporting for
  - Safer chemicals
  - Climate/energy
  - Waste minimization
- What we report publicly
- Q&A



# Why Environmental Stewardship at KP?

It's about health.



“We aspire to provide health care services in a manner that protects and enhances the environment and the health of communities now and for future generations.”



# Integration into KP's Strategy

## KP's Strategic Imperatives

**Transforming Quality and Service**

**Growing Membership**

**Improving Cost Structure**

**Implementing Infrastructure**

**Enabling Performance through People**

## Environmental Stewardship Contributions

**Reduce environmental contributors to disease**

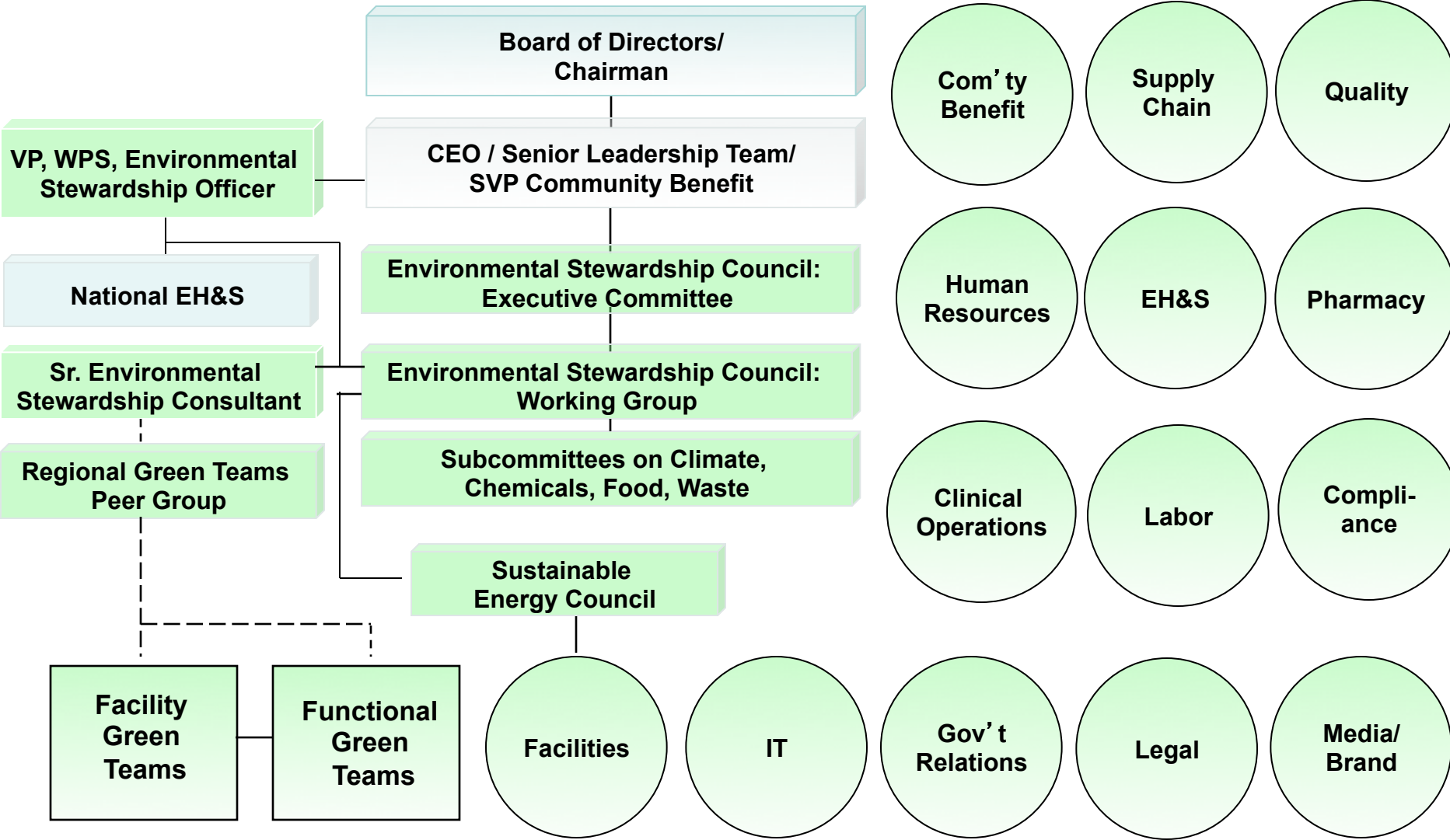
**Attract "green" consumers**

**Saved \$26 million in 2010**

**Reduce vehicle trips through e-mailing your doctor**

**Empower staff through Green Teams**

# Governance, Accountability, Structure



# Environmental Stewardship Priorities

**Safe Chemicals**



**Climate/Energy**



**Waste Reduction**



**Water**



**Sustainable Food**





# Safer Chemicals

## **KP' s Guideline:**

We aim to advance an economy where the production and use of chemicals are not harmful for humans or the environment.



# Sustainability Scorecard for Suppliers

- Supplier disclosure required
- Part of formal bid process
- 17 corporate level questions
- Product-specific:
  - 10 questions re chemicals
  - 5 questions re waste
- \$130 billion impact (Washington Post Oct 12)
- KP is leading the way for the entire health care sector
- Access the scorecard:  
[www.practicegreenhealth.org](http://www.practicegreenhealth.org)



# Sustainability Scorecard for Suppliers

## Chemical and Waste Questions



1 point for yes and 0 for no:

- Electronic parts compliant with RoHS
- Free of Bisphenol A
- All homogenous materials contain less than 1000 ppm of bromine and chlorine
- Free of polyvinyl chloride
- Free of any phthalates
- Free of California Prop 65 Chemical greater than threshold
- Does not create or become hazardous waste
- Free of antimicrobial/antibacterial agent
- Product designed for multi-use
- Product and packaging are labeled clearly
- Product contains more than 10% post-consumer recycled content
- Primary Packaging - more than 10% post-consumer recycled content
- Secondary Packaging- more than 30% post-consumer recycled content



# Climate/Energy

## **KP' s Guideline:**

The health effects of climate change directly impact KP' s ability to fulfill our promise of quality, affordable healthcare. We affirm our commitment to implement strategies that reduce greenhouse gas emissions related to our energy consumption and choice of energy sources.



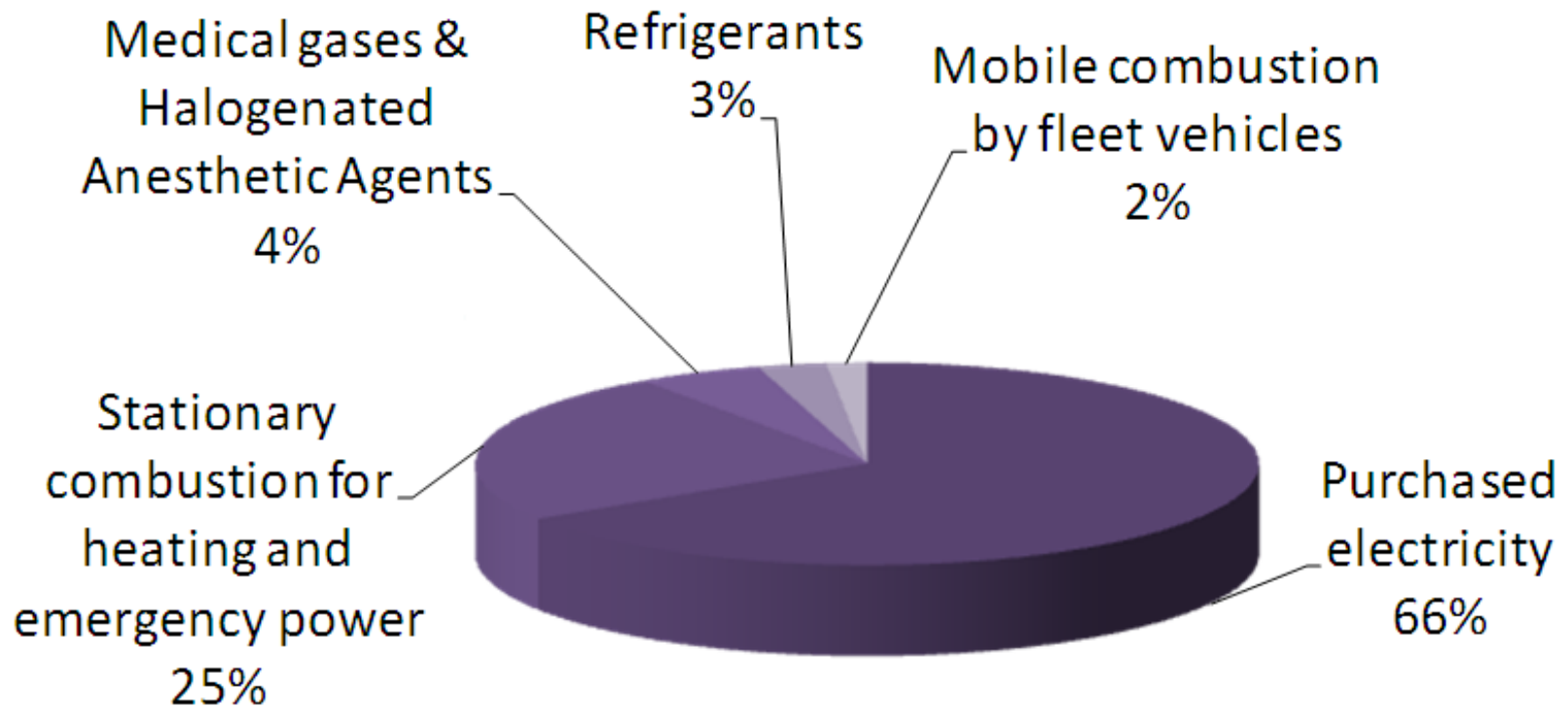
# Climate Goals and Reporting

- 30% reduction in GHG by 2020 (2008 baseline)
- Internal reporting
  - Energy Officers
  - Annual goals and plans
  - Annual performance report
- Environmental Stewardship Council reviews/approves



# Climate/Energy

## Greenhouse Gas Emissions by All Kaiser Permanente Operations in 2010 Preliminary Emissions Estimate: 865,421 metric tons CO<sub>2</sub>e





# Waste Minimization

## **KP' s Guideline:**

Promote individual and community health, environmental stewardship, cost savings and legal compliance by reducing the total amount of waste that is generated in KP buildings.



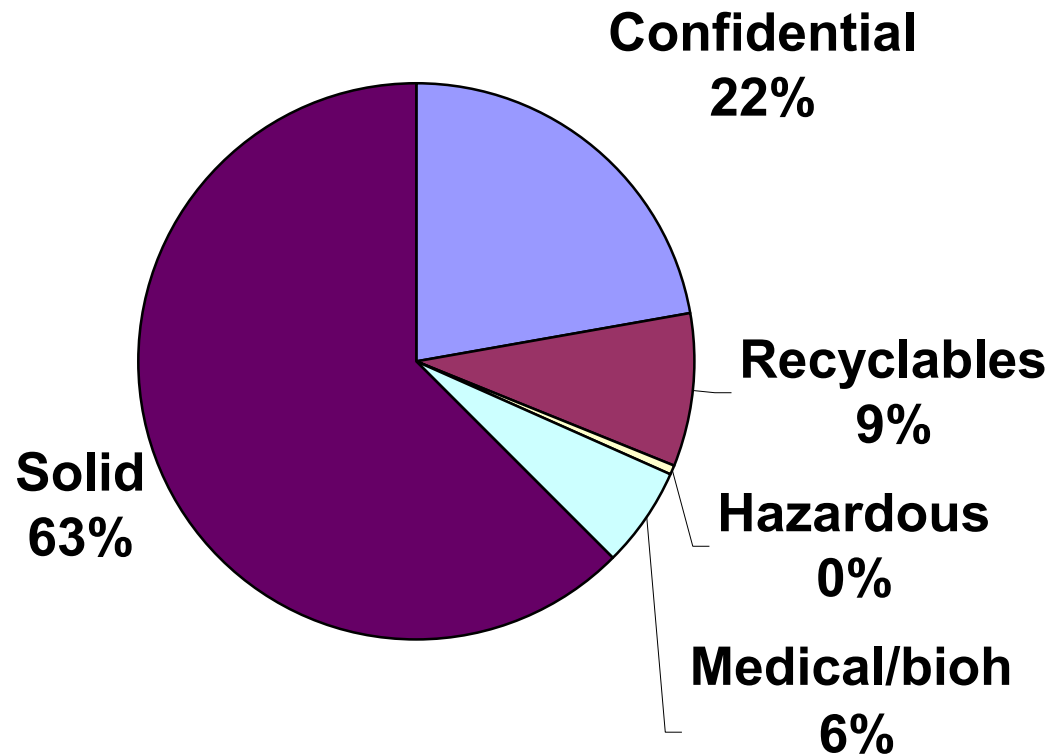
# Waste Goals and Reporting

- 40% landfill diversion by 2015
- Internal reporting
  - Accountable executives in each region
  - Annual goals and plans
  - Annual performance report
- Environmental Stewardship Council reviews/approves



# Waste Types

We are diverting 31% of operational waste from landfills, with a goal to divert 40% by 2015.



*(Excludes construction waste which has very high diversion rate.)*



# What we report publicly

www.kp.org/communitybenefit

Environmental Stewardship | 2010 Community Benefit Annual Report - Microsoft Internet Explorer

File Edit View Favorites Tools Help


Back Forward Stop Home Search Favorites Refresh Print Mail Internet Explorer

Address http://info.kp.org/communitybenefit/html/about\_us/global/annualreport\_10/environments/stewardship.html

## 2010 Community Benefit Report

KAISER PERMANENTE.  
home | welcome video | by the numbers

HEALTHY PEOPLE HEALTHY ENVIRONMENTS NEW HEALTH KNOWLEDGE COMMUNITY ENGAGEMENT



download report print share

### Environmental Stewardship

As a health system founded on the principle of preventive medicine, Kaiser Permanente has a long history of modeling the prevention principle as it applies to the health of our communities. In spearheading efforts to limit and mitigate environmental contributors to disease, we're tackling factors for which we — as a major participant in the health care industry — are in part responsible, including:

- high intensity energy consumption that contributes to climate change
- routine use of toxic materials and chemicals that can harm the environment
- hazardous and other waste
- food production and transport practices that undermine health.

On each of these fronts, we have adopted industry-leading strategies to reduce harmful environmental impacts in our communities. And we are pursuing those strategies with aggressive annual targets. By measuring our progress and sharing our outcomes with other health systems, we're promoting a greener health care industry and healthier, sustainable communities for our members.

HEALTHY ENVIRONMENTS  
Community Health Initiatives  
Environmental Stewardship  
Educational Theatre Productions

Learn more about:  
Environmental Stewardship Fact Sheet  
Our Sustainability Scorecard  
Sustainable Agriculture and Healthy Hospital Food  
Our Environmental Awards

Done Internet

start Cisco Secur... Kathy Ger... Waste polic... MIT LEAP G... GR forum 1... Kaiser Perm... 2 Microso... Waste Red... InsideKP: N... Environmen... 11:28 AM

# What we report publicly

www.kp.org/green

Green Resource Center | Kaiser Permanente News Center - Microsoft Internet Explorer

File Edit View Favorites Tools Help

Back Forward Stop Refresh Home Search Favorites Home Page

Address http://xnet.kp.org/newscenter/aboutkp/green/index.html Go Links Convert Select

**KAISER PERMANENTE.**

My health manager Health & wellness Health plans & services Locate our services

# News Center

news and perspectives from Kaiser Permanente

Search News Center  Go

Press Releases Regional News About KP KP in the News Contacts **Green**

Welcome to Kaiser Permanente's "Green Resource Center"

### Welcome



I invite you to read about how Kaiser Permanente is working to improve the environment, and to make the link between the health of our members, our communities and our planet.

Kaiser Permanente's environmental roots can be traced to the beginning of the modern environmental movement. In 1963, the author and environmental crusader *Rachel Carson* spoke to Kaiser Permanente doctors at San Francisco Medical Center in one of her last speeches. Carson, author of ... [more >](#)

### Green Resources

Learn more about other organizations that are working to 'green' health care ... [more >](#)

### FEATURES

SHARE

- Urban Oasis Flourishes in Oregon with Help from Kaiser Permanente** | 11/23/11  
A vibrant garden grows in an inner-urban, mixed-income housing development in North Portland, Ore. It is part of the community's Village Gardens project, supported by Janus Youth Programs, with help from Kaiser Permanente, one of many community partners providing financial support and assistance.  

- Students and Volunteers with Kōkua Hawai'i Foundation and Kaiser Permanente Plant Legacy Orchard at 'Aikahi Elementary** | 11/17/11
- Kaiser Permanente Makes Great Strides in Sustainable Food for Health** | 11/8/11
- Local Motion! Kaiser Permanente Teams with SolarWorld for Bike Delivery of Solar Panels to New Hospital** | 11/4/11

[all features >](#)



Find a KP Farmers Market



Thrive



Community

Sign up for our Green Resources RSS feed

### Fact Sheets

- Building Green
- Buying Green
- Eating Green

### Timeline

**1950s** | Henry Kaiser's engineers install \$5 million worth of air pollution control equipment ... [more >](#)

### Green News

- Globalsolartechology.com: SolarWorld Solar Panels Position New Kaiser Permanente Hospital for LEED Gold Status | 11/16/11
- Healthcaredesignmagazine.com: Ten-Plus Years (And as Many Analogies) in Healthcare Sustainability | 11/7/11
- Earth Techling (Calif.): Ontario Kaiser Permanente Hospital All Green and Fuzzy | 11/5/11
- More Green News >

© 2011 Kaiser Permanente | www.kp.org/newscenter | site map | feedback

start Cisco Secur... Kathy Ger... Waste polic... 2 Microso... Kaiser Per... 2 Microso... Waste Red... InsideKP: N... InsideKP: N... Green Reso... 11:32 AM

# Collaborations

## Healthier Hospitals Initiative

<http://www.healthierhospitals.org/>

- Developing shared metrics and aggregate reporting
  - Energy
  - Waste
  - Purchasing
  - Chemicals
  - Food



# Q & A

