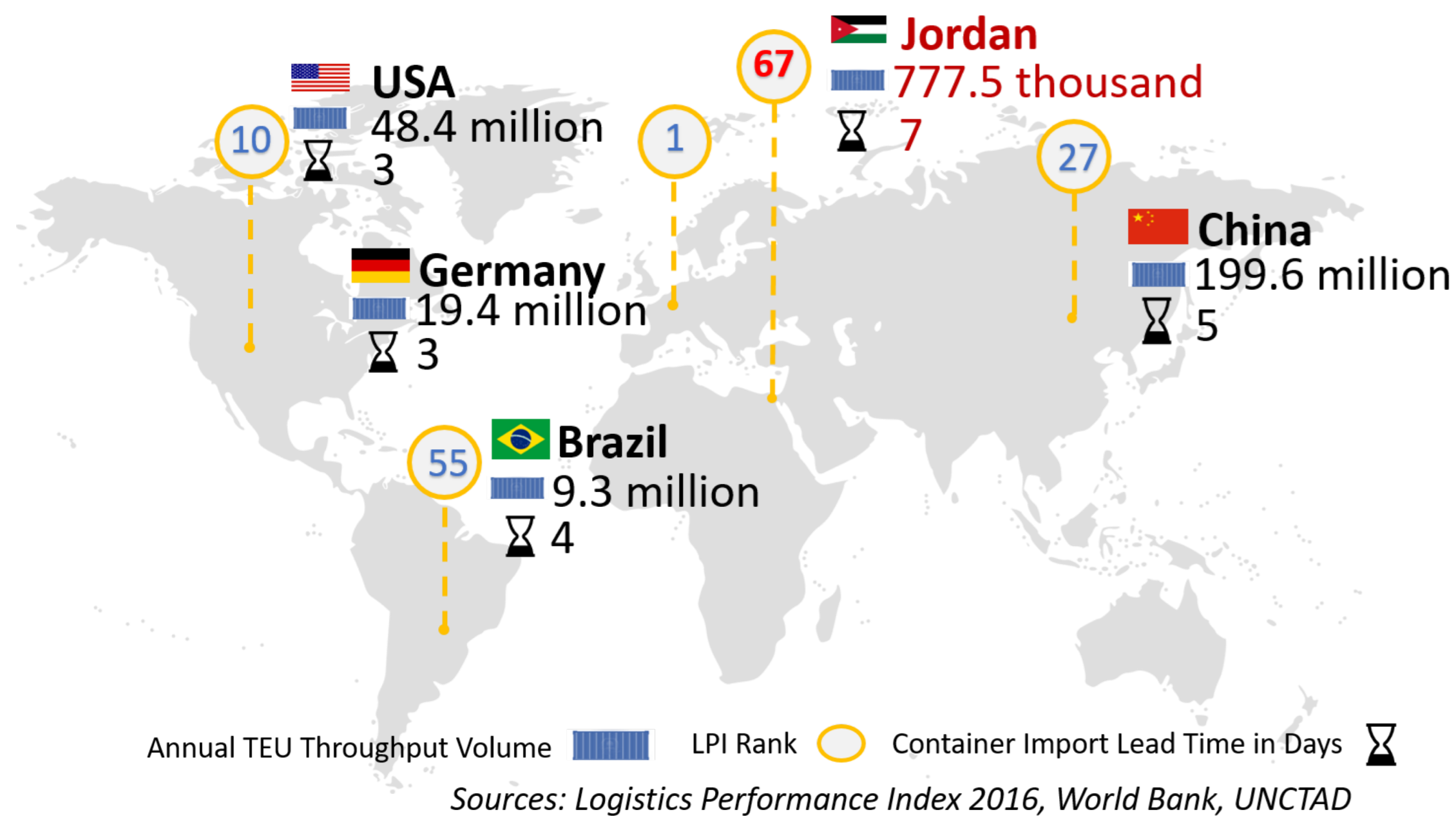


# Bringing Seaports Closer

## Motivation / Background



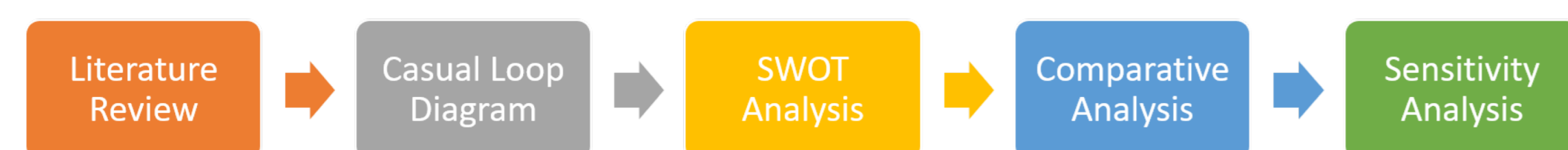
## Key Questions

1. What elements affect the containerized transport movement?
2. What are the outcomes of integrating seaports with nearby dry ports?

## Relevant Literature

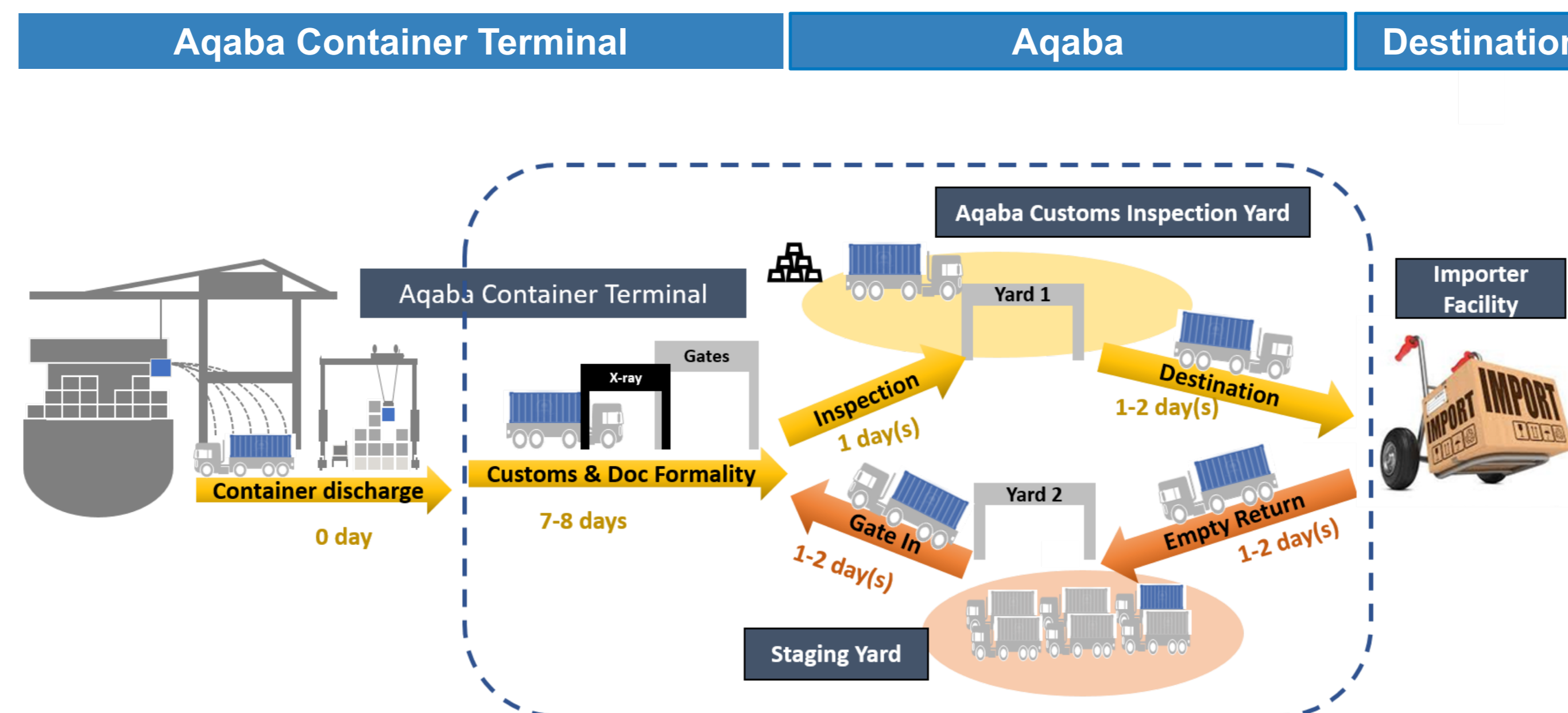
- > Ross, V. & Lumsden, K. (2009). The Dry Port Concept: Moving Seaport Activities Inland.
- > Veenstra, A., Zuidwijk, R., Asperen, E.V. (2012). The extended gate concept for container terminals: Expanding the notion of dry ports

## Methodology



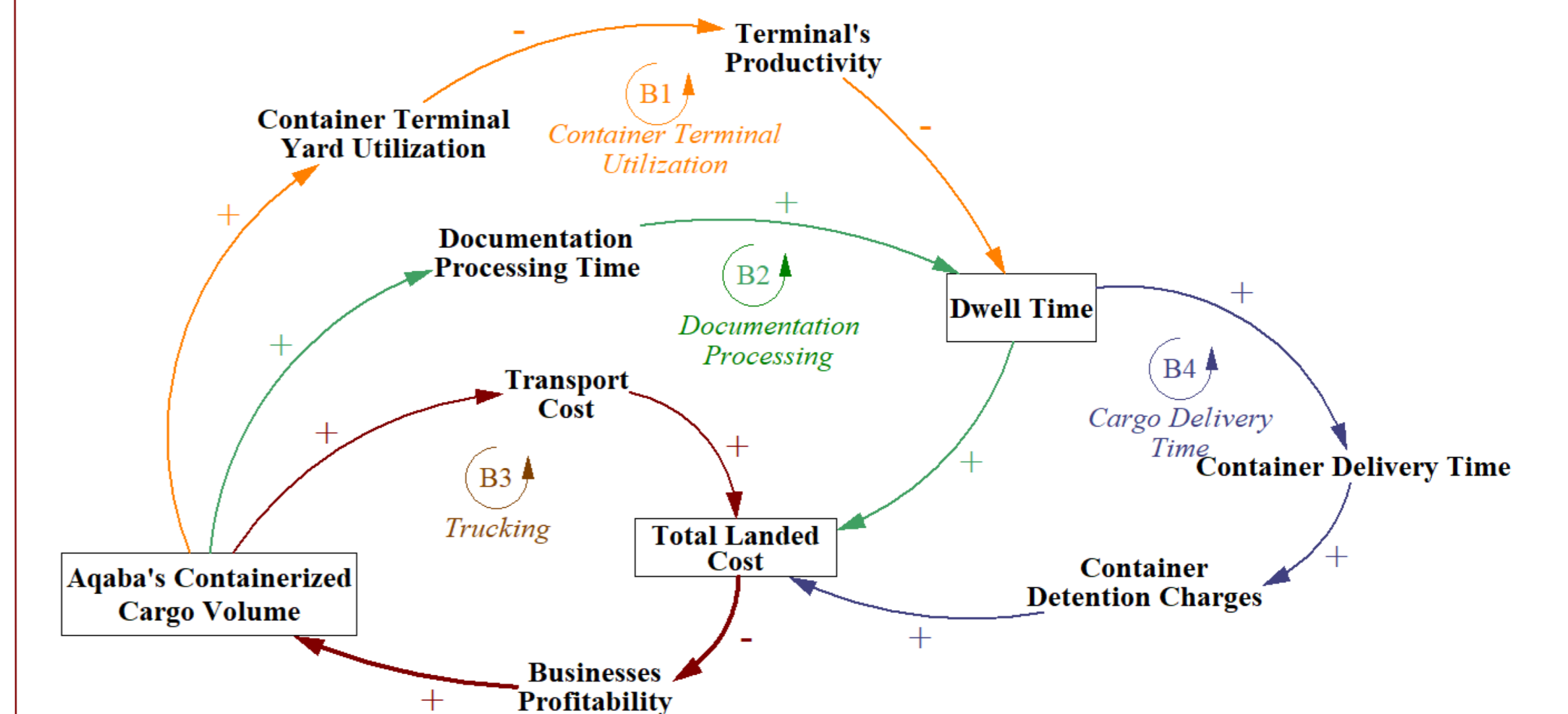
## The Problem

Jordan's current transport chain suffers from the following issues:



## Initial Results

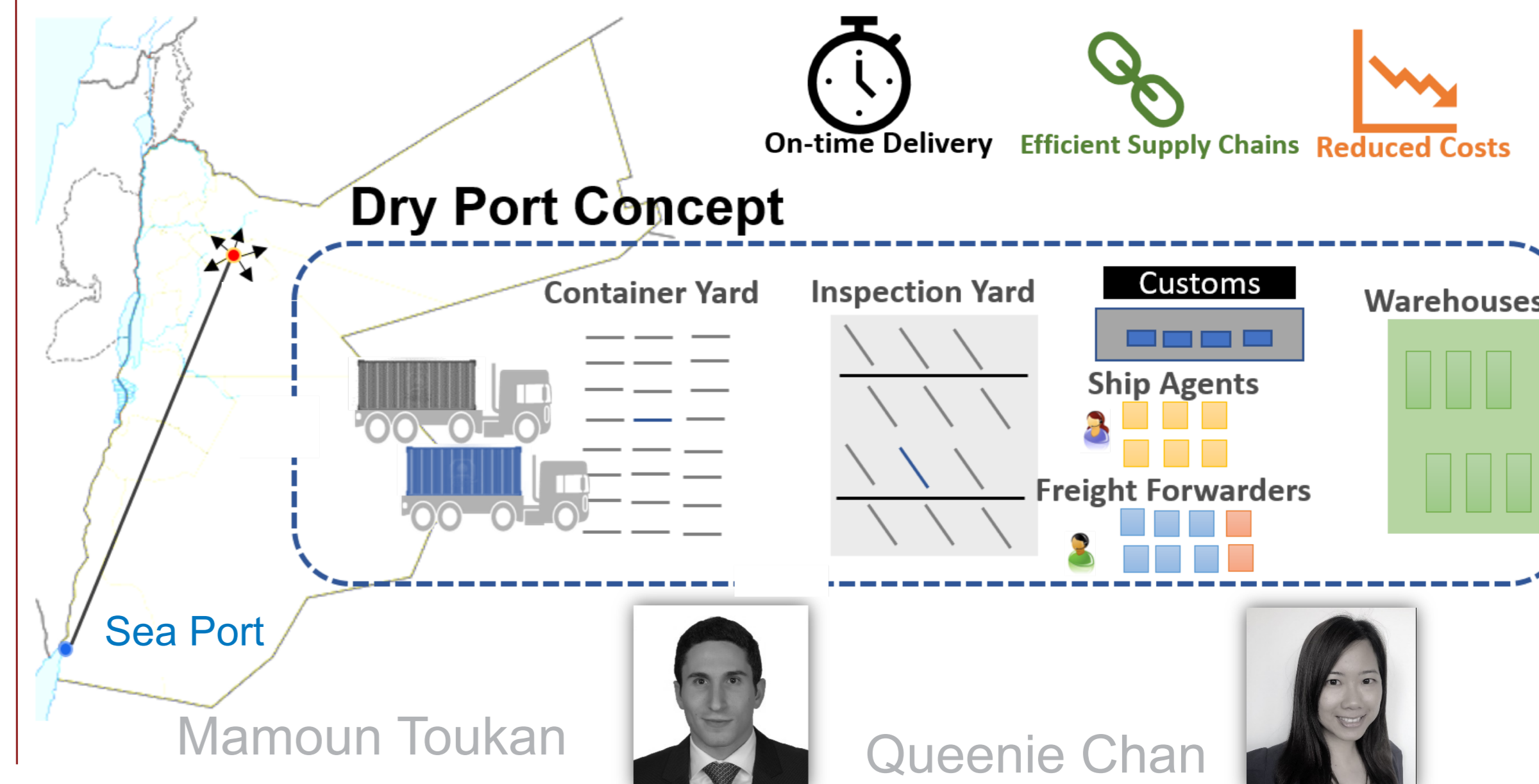
Casual Loop Diagram for Jordan's Containerized Transport Chain



- > Current system is vulnerable to drastic increase in containerized cargo volumes.
- > Investment in a dry Port and integrating it with the seaport will create a more sustainable and resilient transport chain.

## Expected Contribution

- > Supports a sustainable transport chain for the expected volumes for future decades.



Mamoun Toukan



Queenie Chan

